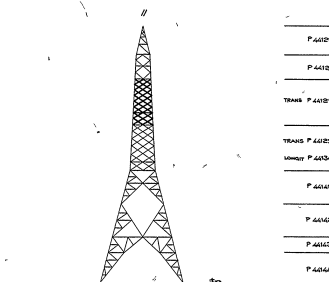
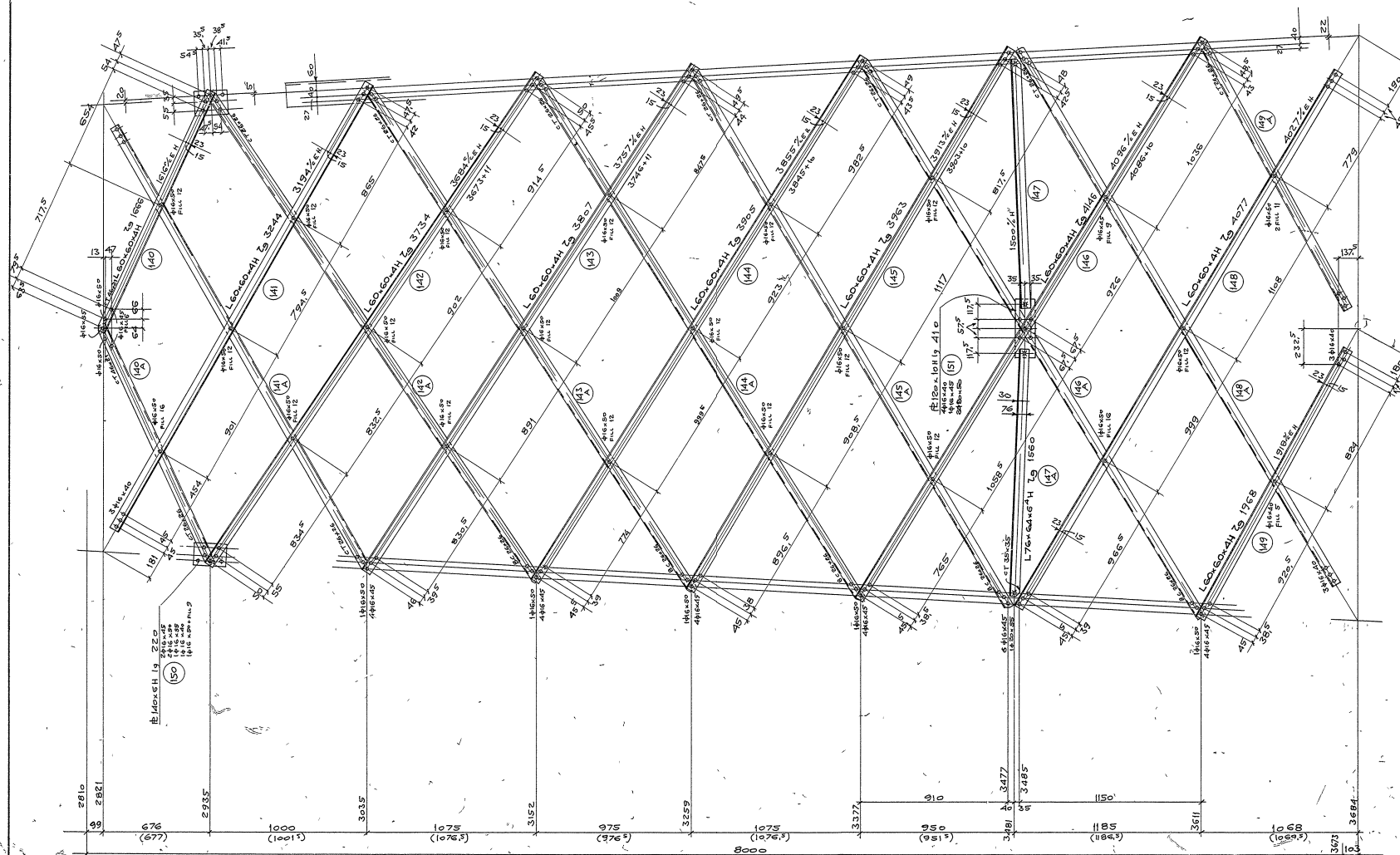


IN FACE $\left\{ \begin{array}{l} \text{Slope} = 0,054741 \\ \text{IN FACE} = 1,001485 \end{array} \right.$

REQUIRED BOLTS FOR ONE COMPLETE TOWER	
TYPE,	N°
$\phi 16 \times 40$	50
45	120
50	74
55	6
60	2
$\phi 20 \times 50$	4
55	4



ΙΔΙΟΚΤΗΣΙΑ ΔΕΗ

~NOTES~

- 1- For general notes see dwg P44125 -
- 2- o 17¹/₂" m dia holes for 16" m dia bolts, cut edge 25" m unless noted
- 3- 2 26¹/₂" m dia holes for 20" m dia bolts, cut edge 30" m -
- 4- o 26¹/₂" m dia holes for 24" m dia bolts, cut edge 40" m
- 5- Provide slip bolts on top diagonally legs for bolt 12170 and for supplement number 8 of bolt 10550 -

BOLL 12175 BOLL 10650		DD 10650 (140) - (151)	
SAE		SOCIETA' ANONIMA ELETTRIFICAZIONE	
GREECE		PUBLIC POWER CORPORATION	
100KV ACHLONIOS-ATHENS TRANSFORMER LINE		100KV ACHLONIOS-ATHENS TRANSFORMER LINE	
100KV ACHLONIOS-ATHENS TRANSFORMER LINE		100KV ACHLONIOS-ATHENS TRANSFORMER LINE	
TYPE Z5. TOWER		TYPE Z5. TOWER	
STRAIN & DEAD END TOWER		STRAIN & DEAD END TOWER	
MIDDLE PORTION OF SUPERSTRUCTURE		MIDDLE PORTION OF SUPERSTRUCTURE	
LONGITUDINAL FACE		LONGITUDINAL FACE	
Scale: 1:10		Scale: 1:10	
P 44128		P 44128	

SOLO PER PENSIERI PESANTI